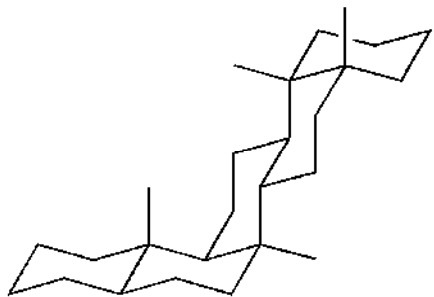
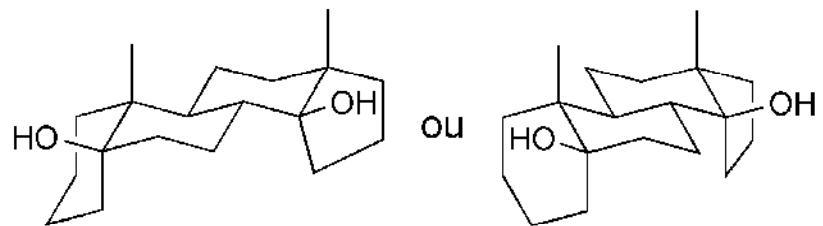
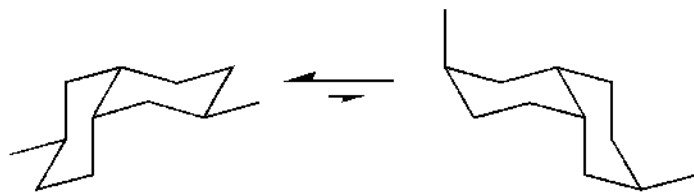
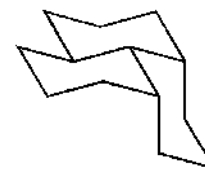
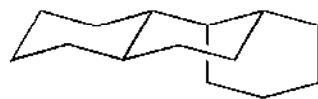
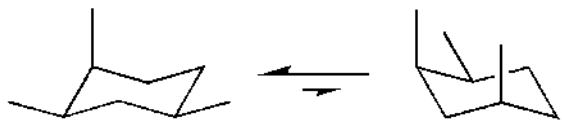
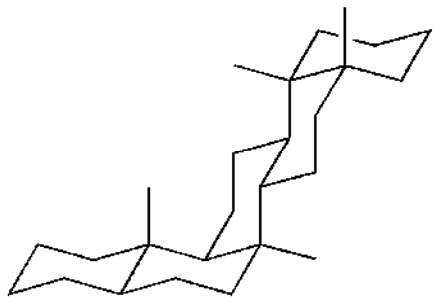
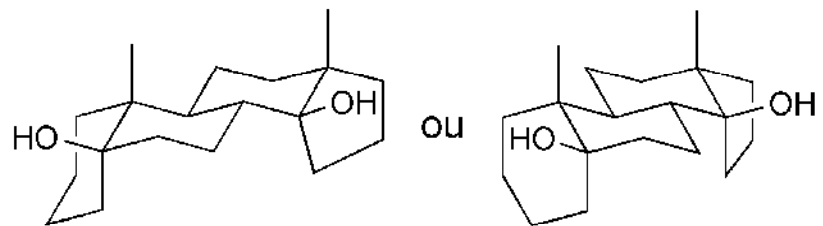
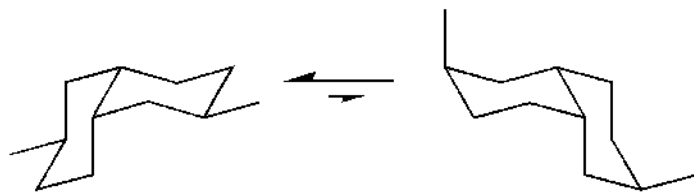
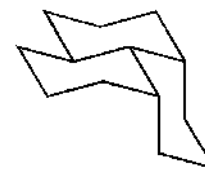
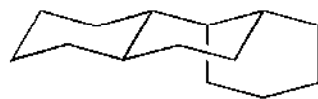
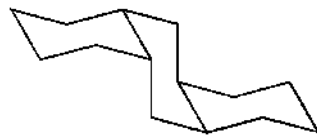
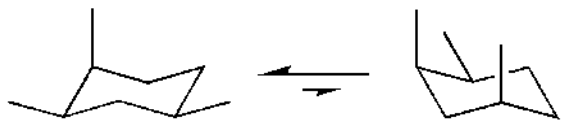


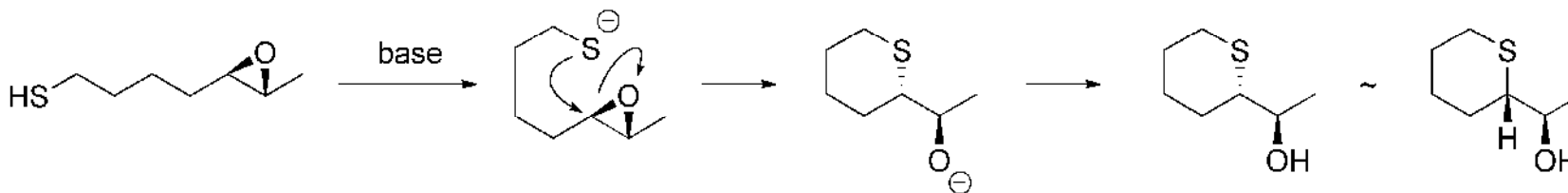
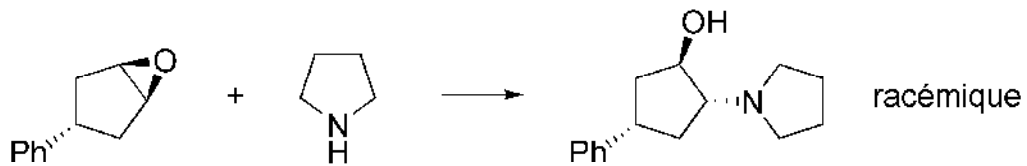
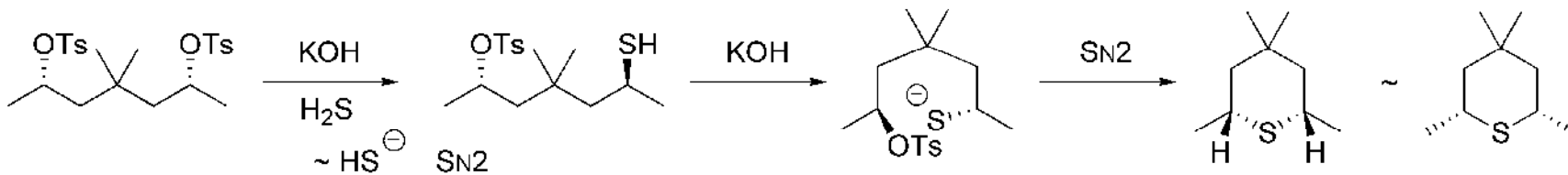
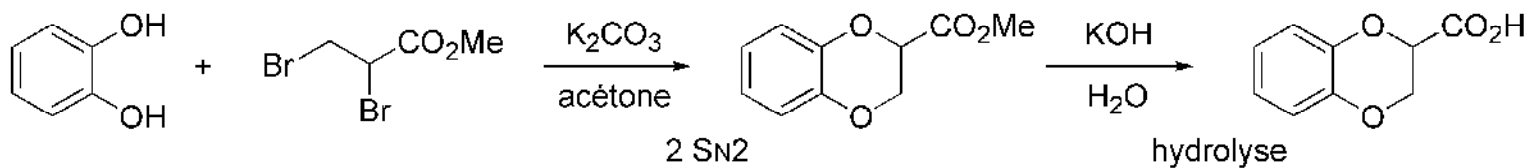
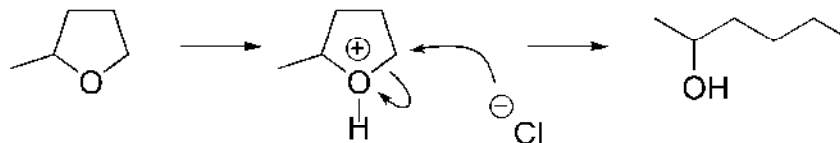
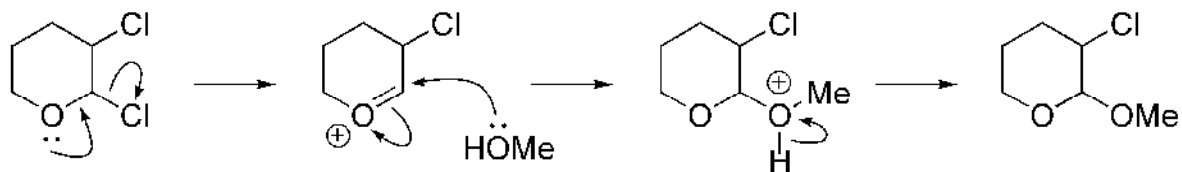
P 47

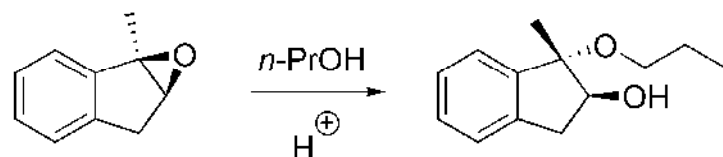
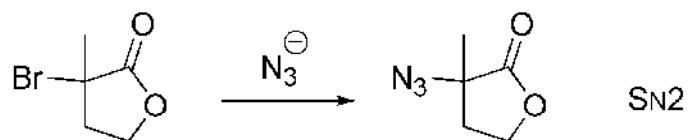


P 47



P 122





l'époxyde se protone,
 un des liens C-O s'allonge pour relacher la tension du cycle à 3,
 le lien qui s'allonge est celui qui conduirait au carbocation le + stable,
 puisqu'un carbocation + substitué est plus stable, l'allongement se produit du côté le + encombré,
 la SN2 a lieu sur le carbone le plus encombré

